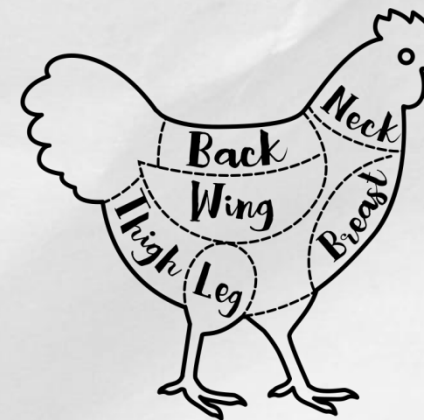
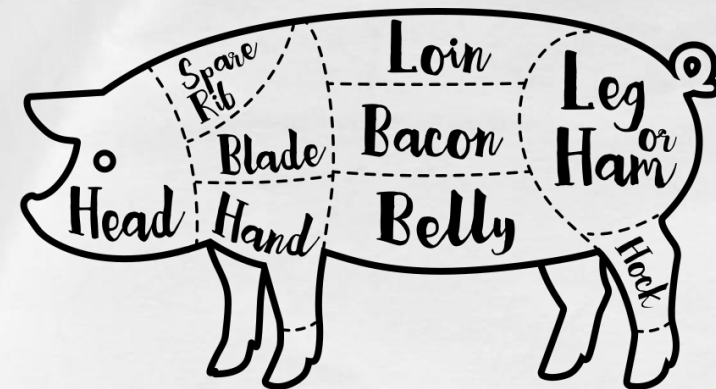
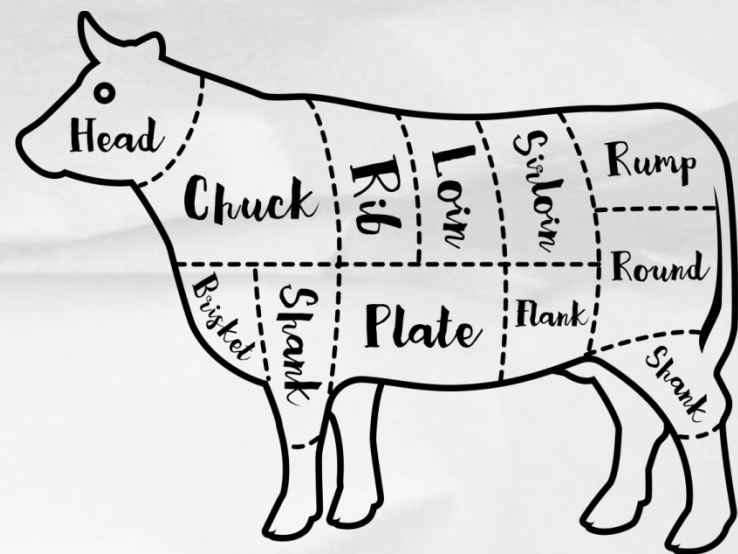




FOOD
PRODUCTS
FOR EXPORT

**SERRA GAÚCHA REGION
SUSTAINABLE PRODUCT LINES**

Refrigeration Suppliers



**NEW
Product
Lines &
Producers
???**

Food Products

NOVA ALIANÇA
Da terra com o amor da nossa gente




São Martinho




raízen



LDC.
Louis Dreyfus Company



**NEW
Product
LINES
???**



Values shown FOB freight, with LC.
Base cost USDs presented, term
contracts are preferred in M/T.
Supply Chain Delivery, TBD

Contacts:

- US: 1+ 202.607.8346 (Eng)
Lylee Enrico Dennis • sdg.grotto@gmail.com
- BR: +55-54-9632.6358 (Eng/Por)
Arnildo Schildt • tremdaserragaucha@gmail.com
- BR: +54-99174.2866 (Por)
Paulo N Tomasini • tomasinipaulo6@gmail.com

GROTTO@SDGROTTO.CO

English (Eng) • Portuguese (Por)



Rice

Cost: \$5.00/kg. Contact for varieties.



Corn Stocks

Cost: \$5.00/kg. Contact for varieties.



Corn Flour

Cost: \$10.00/Kg.



Wheat

Cost: \$5.00/kg. Contact for varieties



Wheat Flour

Cost: \$12.00/Kg.



Oatmeal

Cost: \$12.00/Kg.



Aipim-Cassava

Cost: \$4.50/Kg.



Cassava Flour

Cost: \$10.00/Kg.



Beans

Cost: \$2.00/kg. Contact for varieties.



Lentil

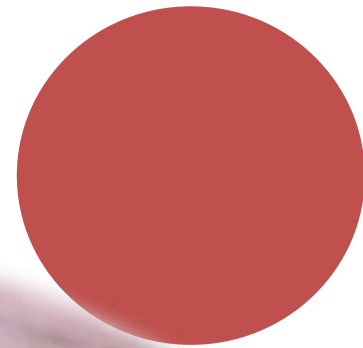
Cost: \$8.00/kg.



Soy

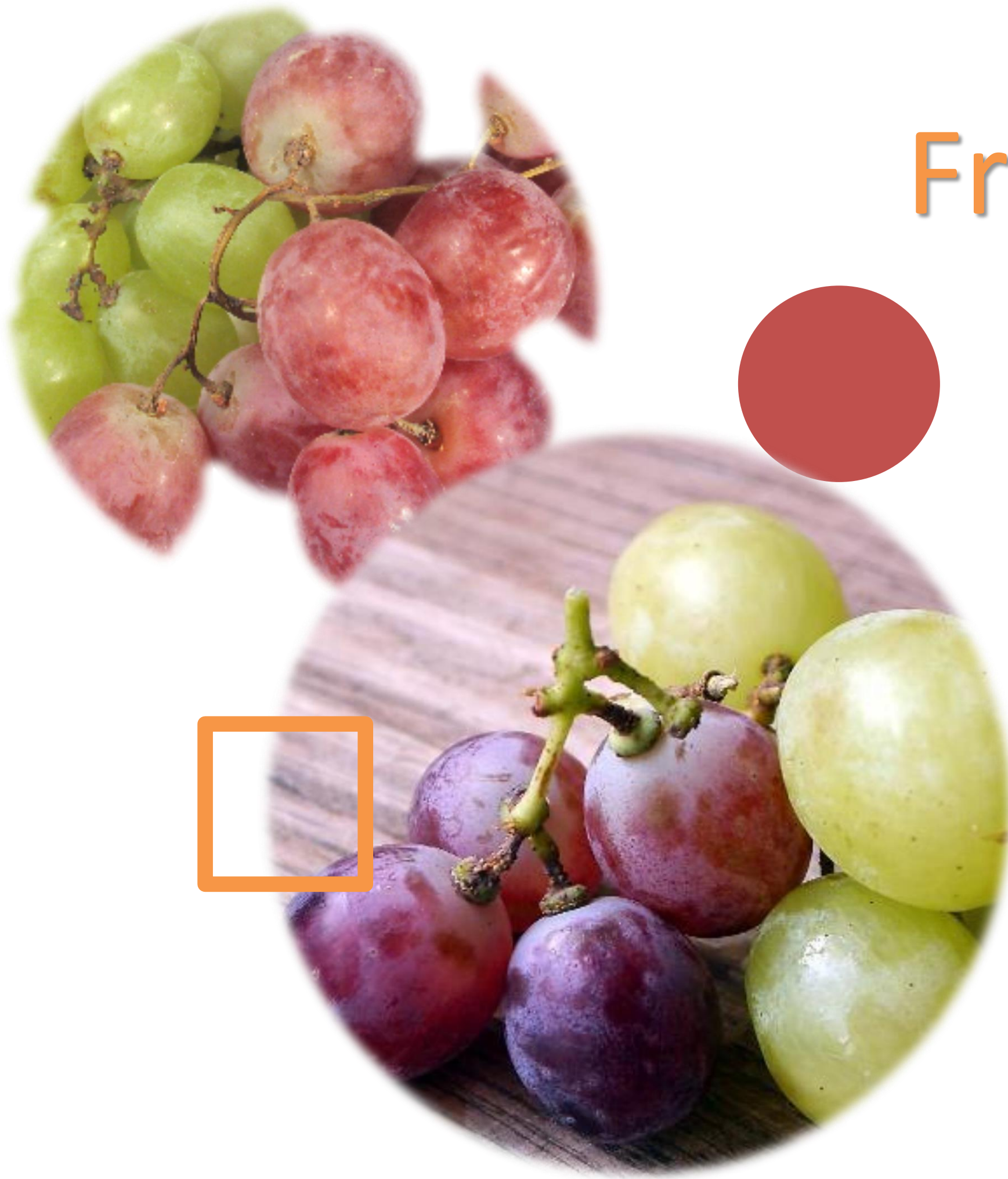
Cost: \$10.00/kg.

Fruits & Vegetables



Grapes

Cost: \$9.00/kg. Contact for varieties.





Apples

Cost: \$5,00/kg, Contact for varieties.



Melons

Cost: \$7.00/kg. Contact for varieties.



Papaya

Cost: \$6.00/kg.



Watermelons

Cost: \$30.00/kg. Contact for varieties.



Pumpkins

Cost: \$9.00/kg.



Guava

Cost: \$6.00/kg.



Blueberries

Cost: \$4.00/kg.



Strawberries

Cost: \$24.00/Kg.



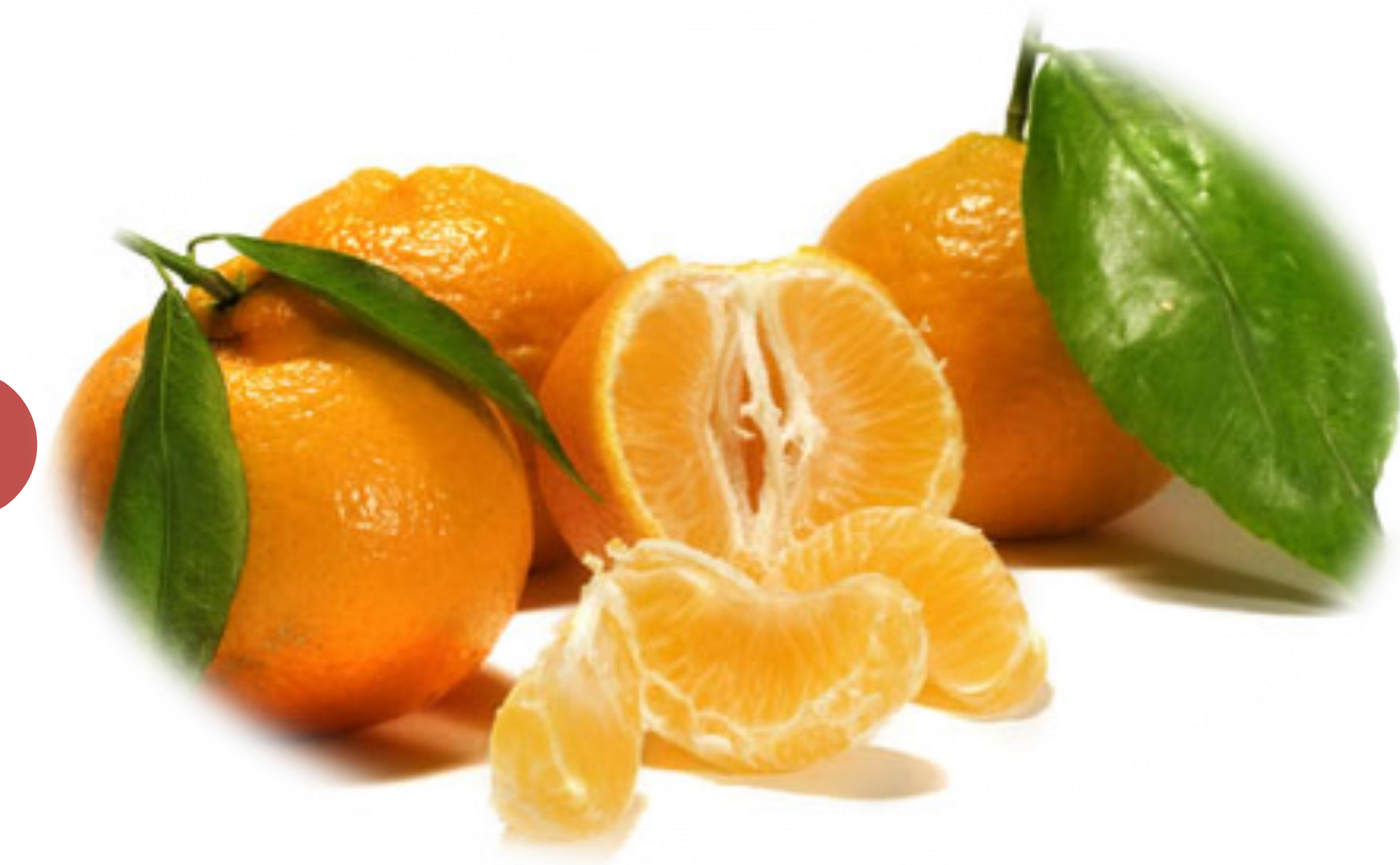
Bananas

Cost: \$6.00/kg.



Lemons

Cost: \$5.00/kg. Contact for varieties.



Bergamot

Cost: \$10.00/kg.



Oranges

Cost: \$10,00/kg contact for varieties



Mangos

Cost: \$6.00/Kg.



Caqui

Cost: \$8.00/Kg.



Pears

Cost: \$8.00/Kg. Contact for varieties.



Figs

Cost: \$10.00/Kg.



Avocados

Cost: \$10.00/kg.



Value Added Juices and Extracts

Cost: \$9,60/Lts. Contact for varieties.



Tomatoes

Cost: \$8.00/kg. Contact for varieties.



Aubergine (*Egg-Plant*)

Cost: \$8.00/kg.



Arugula

Cost: \$5.00/kg.



Radicchio

Cost: \$3.00/kg.



Lettuce

Cost: \$3.00/kg. Contact for varieties.



Spinach

Cost: \$18.00/Kg.



Kale

Cost: \$15.00/Kg.



Peas

Cost: \$4.00/kg. Contact for varieties.



Cabbage

Cost: \$7.00/Kg. Contact for varieties.



Zucchini

Cost: \$4.00/kg. Contact for varieties.



Cauliflower

Cost: \$15.00/Kg.



Asparagus

Cost: \$15.00/Kg. Contact for varieties.



Radishes

Cost: \$10.00/kg.



Carrots

Cost: \$7.00/Kg. Contact for varieties.



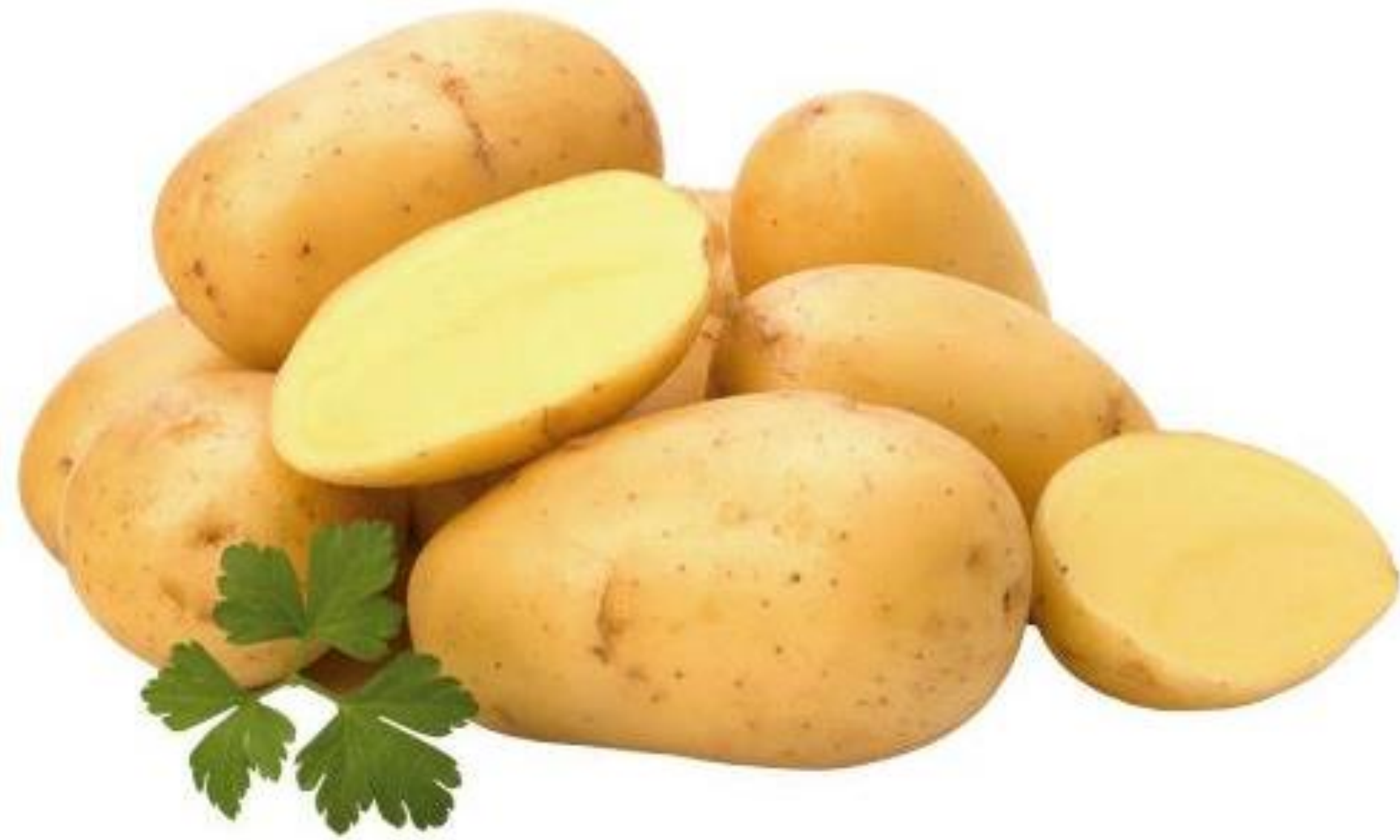
Ginger Root

Cost: \$18.00/Kg.



Broccoli

Cost: \$15,00/Kg.



English Potatoes

Cost: \$5.00/kg.



LIVESTOCK MEATS

Cow Beef

Cost: \$10.00/kg. Contact for varieties.





Lamb Meats

Cost: \$35,00/kg. Contact for varieties.





Pork Meats

Cost: \$14.00/kg. Contact for varieties.



Boar Meats

Cost: \$20.00/kg. Contact for varieties.



Fish

Cost: \$35.00/kg. Contact for varieties.



Frog Meat

Cost: \$30.00/kg.



Chicken Meats

Cost: \$11.00/kg. Contact for varieties.





Eggs

Cost: \$11.00/kg.

DAIRY PRODUCTS



Cow's Milk

Cost: \$7.00/kg. Contact for varieties.





Cheese

Cost: \$4,00/kg, Contact for varieties.



Butter

Cost: \$20.00/kg. Contact for varieties.



Margarine

Cost: \$25.00/kg. Contact for varieties.



Pork Lard

Cost: \$15.00/kg.



Soy Oil

Cost: \$15.00/Kg.



Olive Oil

Cost: \$20.00/Kg. Contact for varieties.



Sunflower Oil

Cost: \$15.00/Kg.



Sugar

Cost: \$8.00/kg. Contact for varieties.

BRAZILIAN SPECIALTIES

Yerba Mate Herb

Cost: \$15.00/Kg.





Pinion: Brazilian Pine Nut Seeds

Cost: \$9.00/Kg.





Wines

Cost: \$12.00/kg. Contact for varieties.



Graspa-Tequila Brazilian Liquor

Cost: \$15.00/kg. Contact for varieties.



Cachaça-Rum Brazilian Liquor

Cost: \$25.00/kg. Contact for varieties.

GROTTO's Dividends and Requirements

- Through GROTTO Branding, executives will experience quality product lines and a cultural emergence via cultural trade missions and market driven events, and
- We have programming agendas to help validate returns through our matrix of global access brand protocols for verification of sustainable product (s).
- Letter of Intent LOI from buyers and producers offers;
- Valid bulk purchase order and confirmed Letter of Credit;
- Receipt of deposit for values of market (s) investment;
- Initiate logistical operations for export.

Future Business & Business Scaling

Expansion:

- Qualification of small/medium producers for exportation;
- Business corridor with partners in North/South America;
- Support for the promotion of new business in Brazil and,
- Development of premium and exclusive products for GROTTTO.



Contacts

Arnildo Schildt (Eng/Por)

Institutional Relations

tremdaserragaucha@gmail.com

Lyle Enrico Dennis (Eng)

International Relations

grotto@sdgrotto.co

